

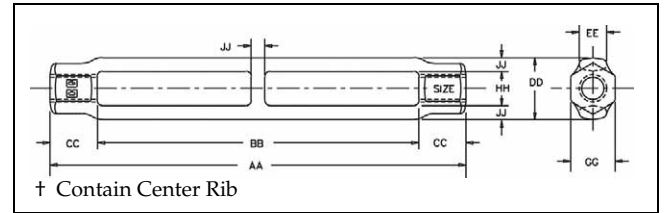
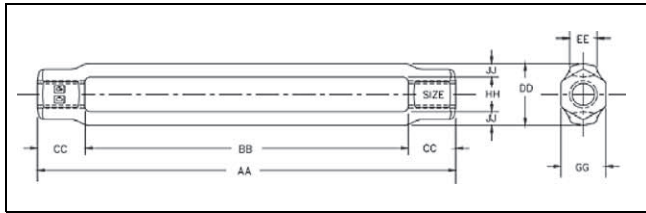
# Turnbuckles - Body Only



**Fatigue Rated**

## HG-2510 BODY

- Heat treat by normalizing.
- Hot Dip galvanized.
- UNC threads
- Fatigue Rated.
- Meets the performance requirements of Federal Specifications FF-T-791b, Type 1, Form 1 - Class 2, except for those provisions required by the contractor.



Shank Diameter & Take Up (mm)	HG-2510 Stock No.	Working Load Limit (t)	Weight Each (kg)	Dimensions (mm)							
				AA	BB	CC	DD	EE	GG	HH	JJ
* 6.35 x 102	1033893	.23	.07	124	103	10.2	18.3	8.64	12.7	9.65	4.32
* 7.94 x 114	1033919	.36	.10	142	116	12.7	20.8	9.65	14.2	11.2	4.83
* 9.53 x 152	1033937	.54	.13	185	155	15.0	22.4	9.65	16.0	12.7	4.83
12.7 x 152	1033955	1.00	.32	196	153	21.1	30.2	17.3	20.6	16.0	7.11
†12.7 x 229	1033973	1.00	.47	280	238	21.1	30.2	17.3	20.6	16.0	7.11
†12.7 x 305	1033991	1.00	.58	356	314	21.1	30.2	17.3	20.6	16.0	7.11
15.9 x 305	1034017	1.59	.50	204	153	25.1	36.3	21.1	25.4	19.1	8.64
†15.9 x 229	1034035	1.59	.72	289	239	25.1	36.3	21.1	25.4	19.1	8.64
†15.9 x 305	1034053	1.59	.89	365	315	25.1	36.3	21.1	25.4	19.1	8.64
19.1 x 152	1034071	2.36	.68	210	156	26.9	44.2	23.9	28.7	23.9	10.2
†19.1 x 229	1034099	2.36	.98	298	244	26.9	44.2	23.9	28.7	23.9	10.2
†19.1 x 305	1034115	2.36	1.21	374	320	26.9	44.2	23.9	28.7	23.9	10.2
†19.1 x 457	1034133	2.36	1.65	525	471	26.9	44.2	23.9	28.7	23.9	10.2
22.2 x 305	1034179	3.27	1.64	371	309	31.2	50.8	28.7	33.3	26.9	11.9
†22.2 x 457	1034197	3.27	2.39	536	473	31.2	50.8	28.7	33.3	26.9	11.9
25.4 x 152	1034213	4.54	1.51	229	157	35.8	62.2	31.8	38.1	31.8	15.2
25.4 x 305	1034231	4.54	2.42	381	309	35.8	62.2	31.8	38.1	31.8	15.2
25.4 x 457	1034259	4.54	3.33	533	462	35.8	62.2	31.8	38.1	31.8	15.2
†25.4 x 610	1034277	4.54	4.47	703	631	35.8	62.2	31.8	38.1	31.8	15.2
31.8 x 305	1034339	6.89	2.59	391	306	42.4	66.5	31.8	47.8	38.1	14.2
31.8 x 457	1034357	6.89	3.44	544	459	42.4	66.5	31.8	47.8	38.1	14.2
†31.8 x 610	1034375	6.89	4.29	710	625	42.4	66.5	31.8	47.8	38.1	14.2
38.1 x 305	1034437	9.71	3.63	402	313	44.5	75.9	38.1	57.2	44.5	15.7
38.1 x 457	1034455	9.71	4.72	554	465	44.5	75.9	38.1	57.2	44.5	15.7
†38.1 x 610	1034473	9.71	5.85	723	633	44.5	75.9	38.1	57.2	44.5	15.7
44.5 x 457	1034552	12.7	7.12	570	467	51.6	91.9	44.5	66.5	53.8	19.1
44.5 x 610	1034570	12.7	8.71	722	619	51.6	91.9	44.5	66.5	53.8	19.1
51.0 x 610	1034632	16.8	11.7	740	622	58.9	105	50.8	76.2	60.5	22.4
63.5 x 610	1034678	27.2	25.4	804	625	89.7	143	69.9	98.6	79.3	31.8
70.0 x 610	1034696	34.0	24.5	804	626	88.9	143	69.9	98.6	114	31.8

\* Mechanical Galvanized.

† Contain Center Rib for additional body support.

Rigging Accessories